

Hardware

- Dimensions: 133.6 mm x 83.4 mm x 28.6 mm
- Weight: 280 g
- Display: 4.8" 16/9 LCD TFT Touch screen
- Resolution: 480x272
- Display brightness: 350 cd/m2
- Display colours: 65K
- Internal Memory: 128MBytes NAND + 64MBytes DRAM
- Memory Support: card preloaded with navigation software and maps
- GPS receiver: Built-in U-Blox LEA5 1Hz + external U-Blox LEA5 4 Hz, WAAS/EGNOS DGPS enabled
- Processor: Freescale IMx31 - ARM11 520MHz
- Battery: Li-Ion Polymer 1600mAh (About 4hrs)
- 2 speakers
- Self-powered car support
- Audio output for earphones or external speaker
- Master/slave USB port
- SD Slot
- Bluetooth for hands-free calls

Software

Farm Navigation

- Lightbar navigation with parallel and contour guidance
- Onscreen coverage map
- Spray boom virtual switch command
- Field perimeter and field area measurement
- Jobs and fields database in Google Earth™ format
- Obstacles and Soil sample positioning
- Day/Night Mode

Road Navigation

- Portrait or Landscape Navigation mode
- 2D view, 3D view, Night vision
- Turn-by-turn vocal instructions with text-to-speech
- Post code search
- Lat Lon search
- Routing Options: fastest, shortest, avoiding toll roads, walkways, ferry routes, u turns, highways, unpaved roads, built-up areas etc.
- 'Drive me Home' quick command
- Stop planner
- Trip Computer

Special Functions and Multimedia

- Plays images, videos and mp3

Maps

- Australia Maps available on SD Card
- Tele Atlas high coverage maps of Europe also available

What's in the Kit?



G6 FARMNAVIGATOR

- Farm Navigation
- Road Navigation
- Bluetooth for hands-free calls
- Window mounting kit
- Car charger / Wall charger



Weatherproof GPS antenna

The weatherproof GPS antenna works in any environment. A high-quality solution for rooftop or stationary application. WAAS/EGNOS/DGPS enabled



Protective rubber frame

Protects the FARMNAVIGATOR's frame against bumps and scratches.

USB Camera (optional)

The camera is useful for reverse navigation and farm equipment monitoring.



All trademarks and registered trademarks are the property of their respective owners

Images are for illustrative purposes only. Products may change without notice

Authorized Dealer

v 1.2



The most complete GPS solution for today's precision farmer.

The G6 FARMNAVIGATOR was born from the partnership between AvMap, the Italian leader in GPS navigation since 1994, and Satcon System, the specialist in high-tech tools for agriculture. That's why the G6 FARMNAVIGATOR is the most complete GPS solution for today's precision farmer.



Farm Navigation

- Lightbar navigation with parallel and contour tracking
- Sprayboom with audible virtual switch
- Onscreen coverage map
- Field perimeter and field area measurement
- Soil sample positioning or field surveying
- Day/Night Brightness adjust
- Jobs and fields database compatible with Google Earth™ format
- 4Hz DGPS receiver



Road Navigation

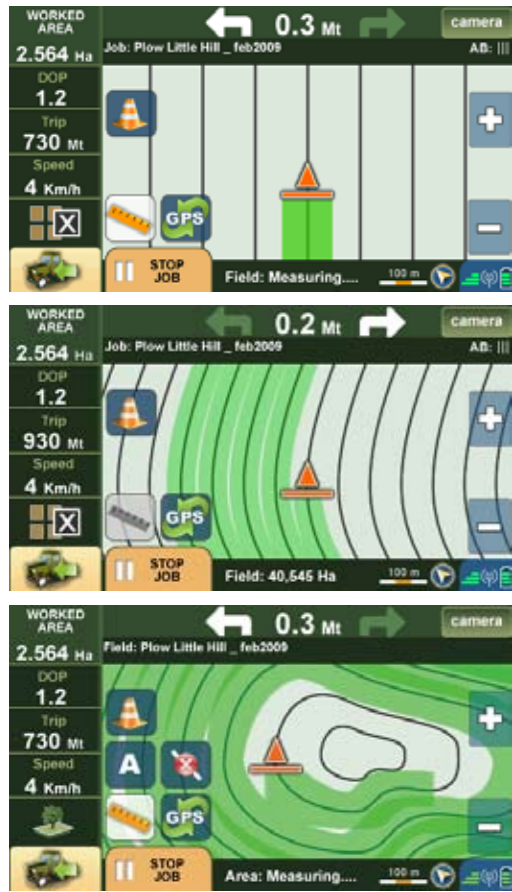
- 100% portable with built-in GPS receiver
- Australian maps
- European maps
- Turn-by-turn vocal instructions
- Trip computer
- Lane assistance



Farm Navigation

Setting your Tramlines

You can easily set guidance lines for your operations choosing between parallel, contour guidelines or existing tramlines.



Parallel Tracking

In the Parallel Tracking mode, the G6 FARMNAVIGATOR creates parallel tramlines on the screen along which you can drive. On the display, Press A to start and B to end, the AB segment will then be traced together with its parallel segments.

Contour Tracking

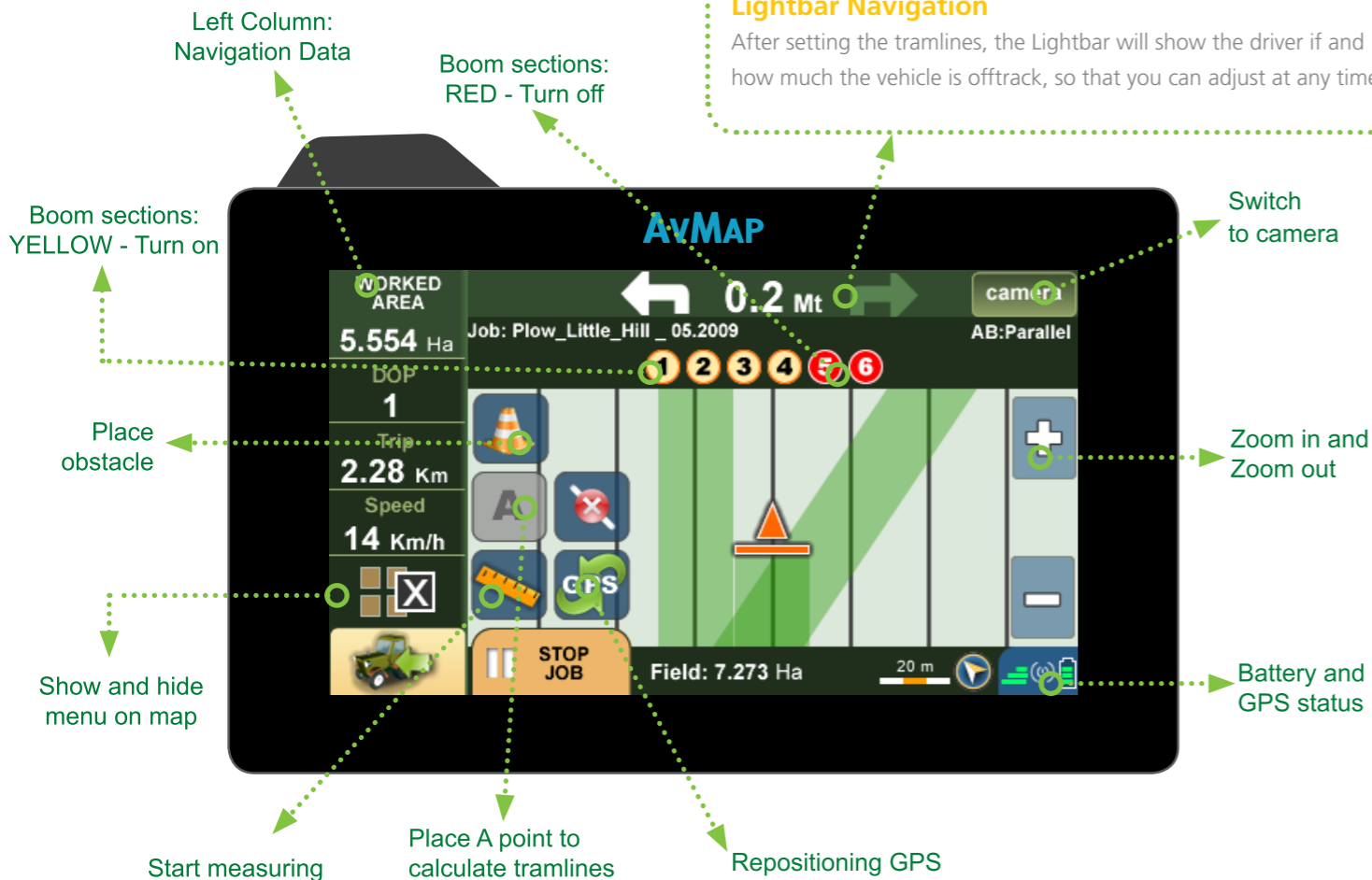
In the Contour Tracking mode, you can create the first tramline in a curved field by pressing A to start and B to end. This tramline will be replicated over the whole field.

Round and Around (Tramlines)

By setting the round and around guide lines you can create concentric lines starting from the field's perimeter. Press A, then start driving along the perimeter and press B when it is completed. The software will replicate the concentric lines to the center of the field.

Lightbar Navigation

After setting the tramlines, the Lightbar will show the driver if and how much the vehicle is offtrack, so that you can adjust at any time.

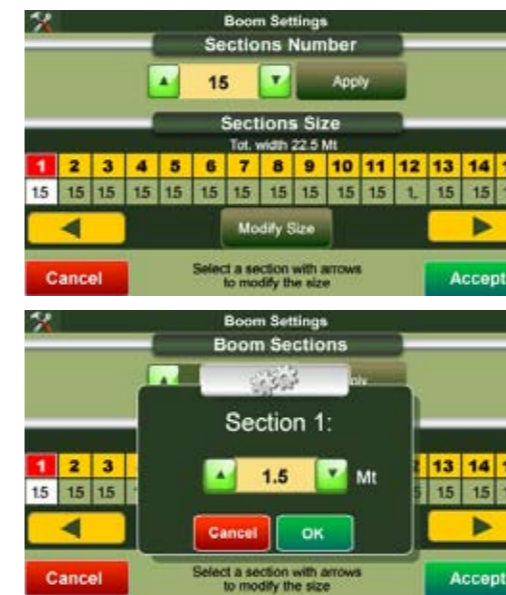
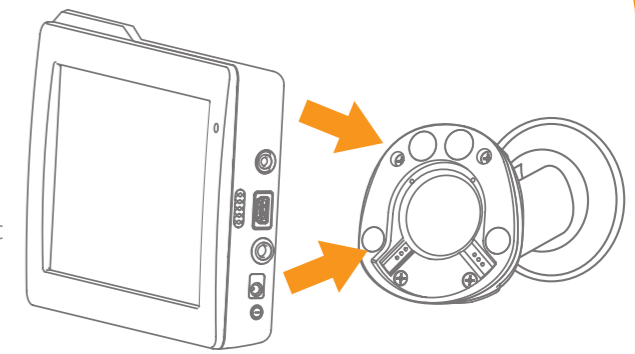


All-in one and portable

Special magnetic dock

G6 FARMNAVIGATOR works on every field and can be used in different vehicles. It is very practical to remove as it is 100% portable. The smart magnetic mount makes it easy to plug in, with no need for cables as the docking station is powered.

Extra mounts can be purchased as spare parts.



Virtual spray boom commander

The G6 FARMNAVIGATOR shows the area that has already been treated and thanks to the virtual spray boom commander it helps saving on product inputs, reducing costs and improving productivity. You can even customise the spraying bar to the number of sections, their length and the number of nozzles for each section. During the navigation the virtual spray boom control will show which spray boom section has to be switched off to avoid overlapping. If the spraying bar is passing over and area that has already been treated, the section will be highlighted in red on the screen to warn you to switch it off, and it will go back to yellow when it exits the treated area, meaning it can be turned on again. These warnings are very useful when making a U turn or when trying to avoid an obstacle. The Virtual Boom section commander works in parallel, contour and Tramline mode!



Save your job and view the job database on Google Maps

When you start a new job, all its data (perimeter, area, treated area, obstacles, timing, maximum DOP and maximum speed) will be saved in a database. The job can be paused and restarted at any time. You can see a data sheet for each job and you can export the database in the Google Maps™ format so that you can view it in Google Maps™ or Google Earth™.



Rear view camera

The G6 FARMNAVIGATOR can be connected to an USB Rear View Camera.

No need for extra displays as the camera uses the 4.8" display of G6 FARMNAVIGATOR. If you need to check the functioning of the machine or to view an implement behind you, just click on the Camera button and the live video will appear on the display.